

Walking Map 散步地圖



- Funaoka Castle Ruins Park
■ 船岡城址公園
- Shibata Sen-ou-kyo Bridge
■ 柴田千櫻橋
- Shiroishigawa Embankment
"Hitome Senbonzakura"
■ 白石川堤一目千本櫻
- Shiroishigawa Sen-ou Park
■ 白石川千櫻公園



Shibata Cherry Blossom Festival Official Website
柴田櫻花祭官方網站

※ The slope car is currently out of service due to mechanical issues.
※ 坡道纜車目前因故障暫停運行。

Recommended:
Best cherry blossom photo spots
推薦
櫻花絕景攝影景點

Please follow proper etiquette when taking photos.
請遵守禮儀進行拍攝

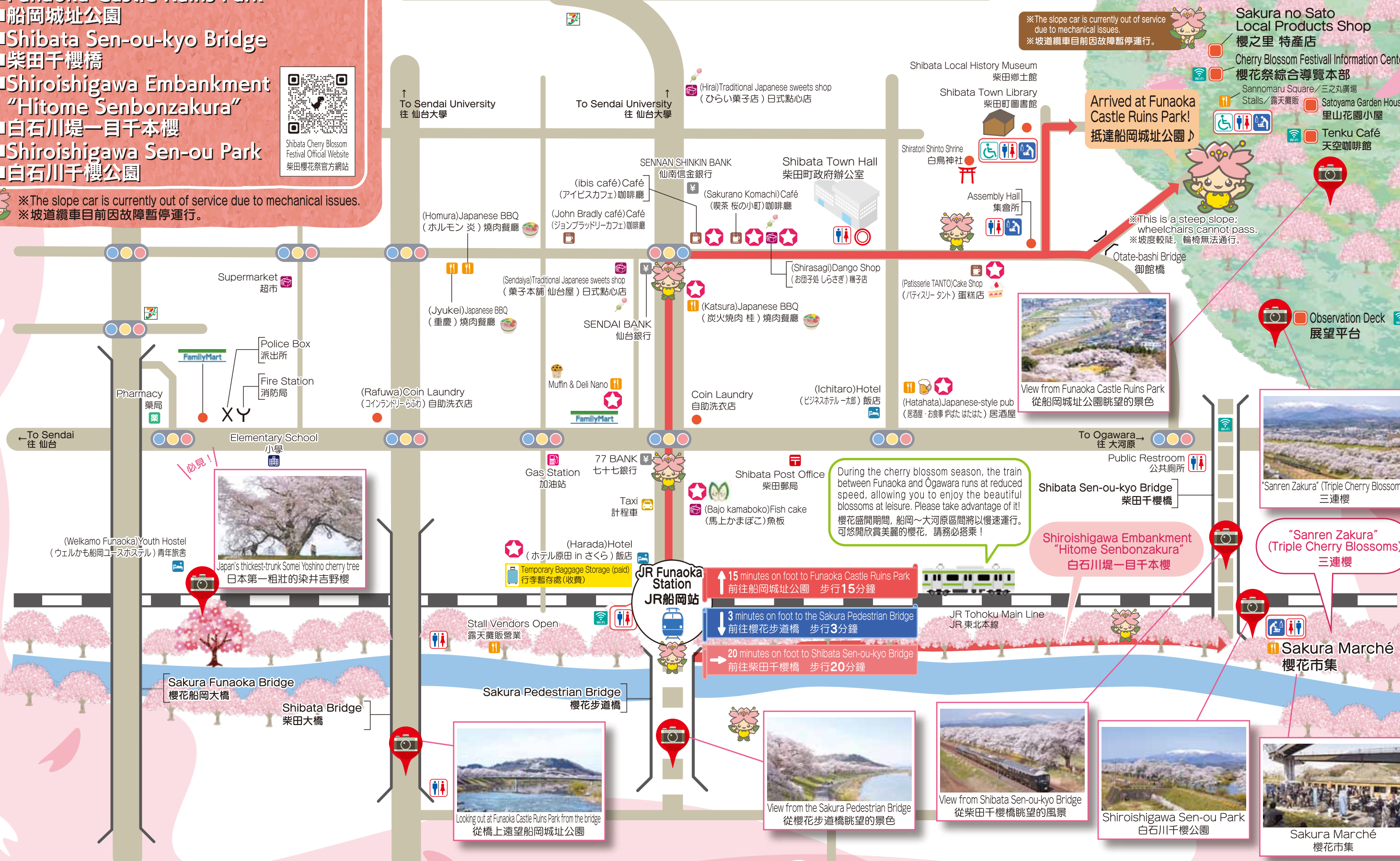
- | | | |
|--------------------|-----------------------|-----------------------------|
| Restaurant 餐廳 | Gas Station 加油站 | Multipurpose Restroom 多功能廁所 |
| Café 咖啡廳 | Post Office 郵局 | Nursing Room 哺乳室 |
| Shop 商店 | Taxi 計程車 | Bank 銀行 |
| Accommodation 住宿設施 | Wi-Fi Hotspot WiFi 熱點 | |
| Pharmacy 藥局 | Public Restroom 公共廁所 | |
- Regarding restrooms and nursing rooms, temporary facilities will be available only during the Cherry Blossom Festival.
關於廁所與哺乳室，櫻花祭期間將設有臨時設施。

Hospitality Spots:

- We are distributing brochures related to the Shibata Cherry Blossom Festival.
 - These places can also be used for a quick rest.
- These facilities are available from 10:00 AM to 4:00 PM.

待客服務合作店

- 我們提供與柴田櫻花祭相關的宣傳冊。
 - 也可作為短暫休憩之處。
- ※ 使用時間為 10:00 ~ 16:00.



※ The slope car is currently out of service due to mechanical issues.
※ 坡道纜車目前因故障暫停運行。

Arrived at Funaoka Castle Ruins Park!
抵達船岡城址公園!

※ This is a steep slope; wheelchairs cannot pass.
※ 坡度較陡，輪椅無法通行。



View from Funaoka Castle Ruins Park
從船岡城址公園眺望的景色



Observation Deck
展望平台



"Sanren Zakura" (Triple Cherry Blossoms)
三連櫻



"Sanren Zakura" (Triple Cherry Blossoms)
三連櫻

During the cherry blossom season, the train between Funaoka and Ogawara runs at reduced speed, allowing you to enjoy the beautiful blossoms at leisure. Please take advantage of it!
櫻花盛開期間，船岡~大河原區間將以慢速運行。可悠閒欣賞美麗的櫻花，請務必搭乘！

- 15 minutes on foot to Funaoka Castle Ruins Park
前往船岡城址公園 步行15分鐘
- 3 minutes on foot to the Sakura Pedestrian Bridge
前往櫻花步道橋 步行3分鐘
- 20 minutes on foot to Shibata Sen-ou-kyo Bridge
前往柴田千櫻橋 步行20分鐘



Looking out at Funaoka Castle Ruins Park from the bridge
從橋上遠望船岡城址公園



View from the Sakura Pedestrian Bridge
從櫻花步道橋眺望的景色



View from Shibata Sen-ou-kyo Bridge
從柴田千櫻橋眺望的風景



Shiroishigawa Sen-ou Park
白石川千櫻公園



Sakura Marché
櫻花市集

★You can enjoy the beautiful natural scenery!

Inside Funaoka Castle Ruins Park

Guide Map

Welcome to Funaoka Castle Ruins Park in the "Town of Flowers, Shibata."

Known for its cherry blossoms, it also features various seasonal blooms and stunning views from the summit. Please enjoy a stroll along with the cherry blossoms!

★可以盡情享受美麗的大自然!

船岡城址公園內

導覽圖

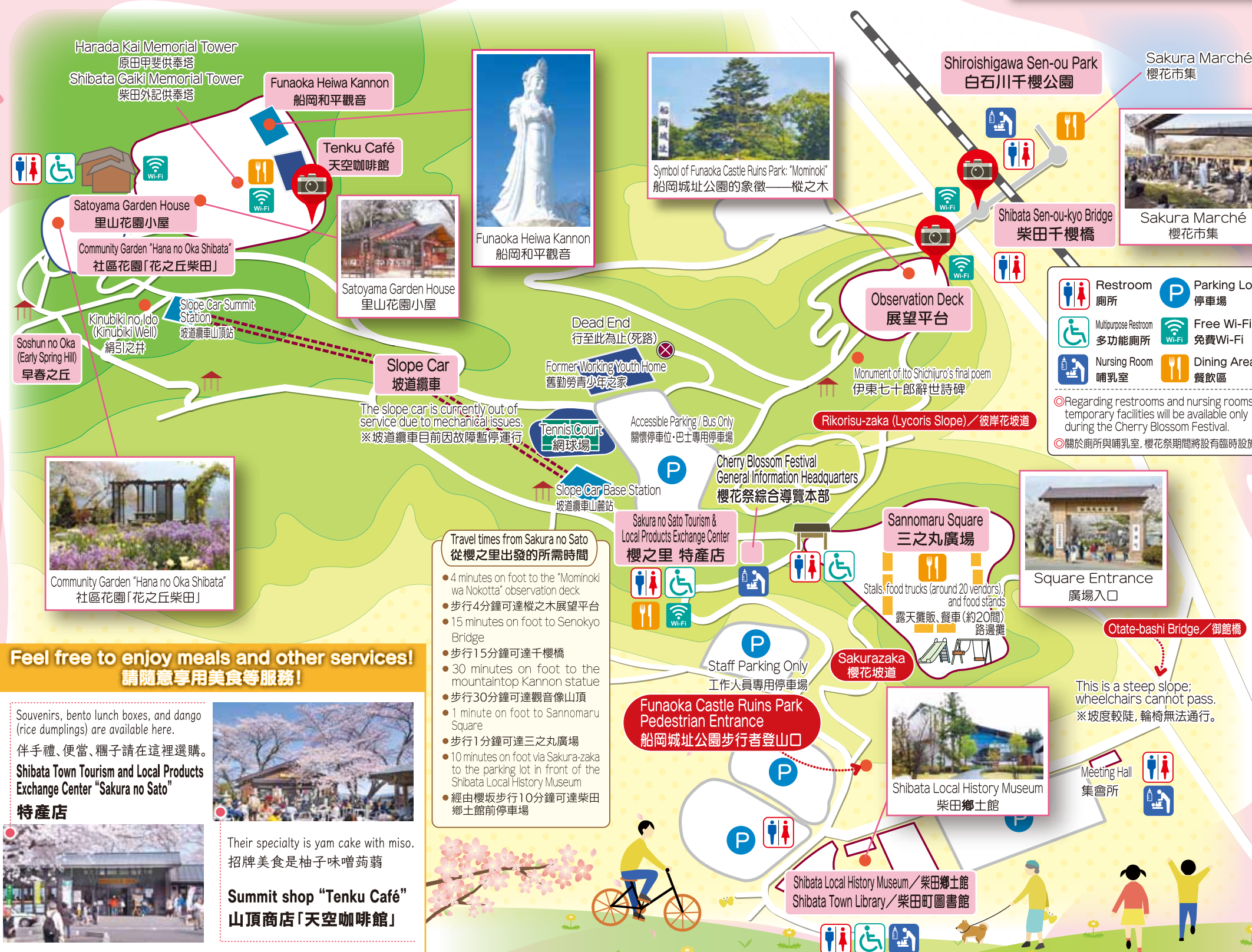
歡迎來到「花之町柴田」的船岡城址公園。這個以櫻花聞名的地方，還有四季變換的各種花卉，並可從山頂欣賞壯麗的風景。請一邊散步，一邊享受櫻花之美!



The "Shibata Sen-ou-kyo Bridge," bustling with many visitors 吸引眾多觀光客的「柴田千櫻橋」



"Sanren Zakura" (Triple Cherry Blossoms) 「三連櫻」



Please follow the rules and etiquette to enjoy cherry-blossom viewing!
請遵守規則與禮儀，愉快地欣賞櫻花!

When viewing the cherry blossoms, please follow these guidelines:

- 賞花時請遵守以下規則:
- Using tripods or similar equipment to reserve a spot for photography is strictly prohibited.
 - 嚴禁使用三腳架等器具占位拍攝。
 - Please take your trash home with you.
 - 垃圾請自行帶回處理。
 - No open flames are allowed.
 - 嚴禁使用火源。
 - Please reserve space in a reasonable manner at the viewing site.
 - Do not use ropes or similar methods.
 - Leaving a space unattended is prohibited.
 - 請以適當方式進行佔位:
 - 不可使用繩索等占位
 - 禁止無人占位
 - Do not post notices on trees or other public property.
 - 嚴禁在樹木等處張貼告示。
 - Please refrain from instruments, karaoke, or loud voices that disturb the neighbors.
 - 請避免樂器演奏、卡拉 OK、大聲喧嘩等影響鄰近居民的行為。
 - If hosting a nighttime gathering, please vacate completely by 9:00 PM.
 - 夜間舉辦宴會時，請於21點前完全撤離。
 - Please practice basic infection prevention measures, such as handwashing and disinfecting.
 - 請遵守勤洗手、消毒等基本防疫對策。
 - Additionally, any actions that disturb other visitors are strictly prohibited.
 - 此外，任何影響他人之行為皆嚴禁。

Feel free to enjoy meals and other services!
請隨意享用美食等服務!

Souvenirs, bento lunch boxes, and dango (rice dumplings) are available here.
伴手禮、便當、糰子請在這裡選購。

Shibata Town Tourism and Local Products Exchange Center "Sakura no Sato"
特產店

Their specialty is yam cake with miso.
招牌美食是柚子味噌蒟蒻

Summit shop "Tenku Café"
山頂商店「天空咖啡館」

Thank you for your understanding and cooperation.
感謝您的理解與配合。

Shibata Cherry Blossom Festival Executive Committee
柴田櫻花祭執行委員會